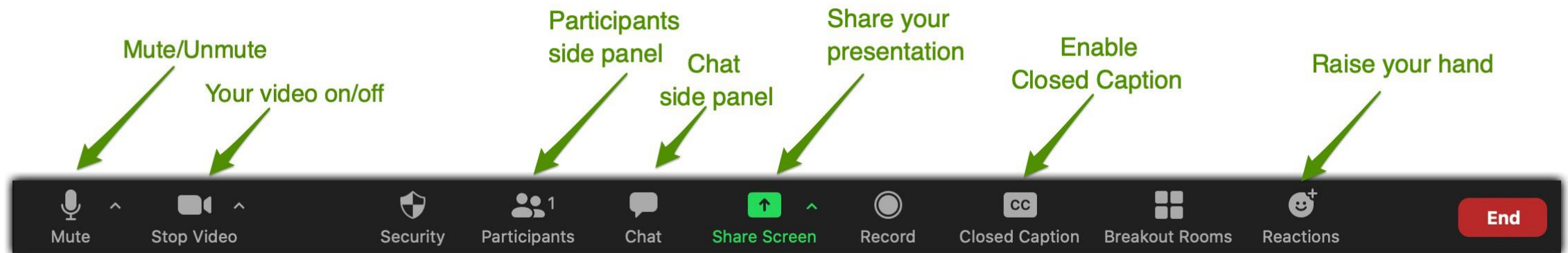


Logistics

- Please **mute** yourself when not speaking
 - *6 to mute/unmute if you're calling in from your phone
- Utilize the **raise hand** feature to identify you would like to speak
- Utilize the **chat** feature to enter comments or questions
- **Closed Caption** is enabled – you must select it to utilize this feature






Executive Office of Elder Affairs
 RESPECT INDEPENDENCE INCLUSION
**Hospital to Home Partnership
 Program Kick Off Meeting
 January 16, 2024**



Agenda

- Introductions
- Learning Collaborative Survey Results
- Next Steps



Introductions



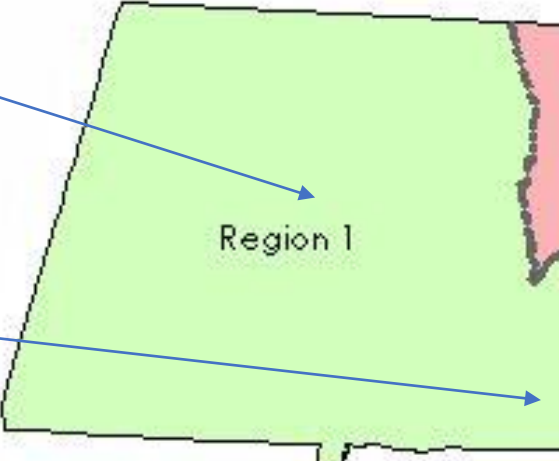
One representative for each team

- **Please introduce the members of your ASAP/Hospital Partnership and their roles.**
- **Are you working in conjunction with another ASAP?**
- **Where are you in your hiring and training process?**
- **How is your team structured?**
- **What is one unique thing about your program?**

Hospital to Home Partnership Program

**Massachusetts
Emergency Medical Services Regions**

ASAP: West Mass Elder Care
Hospital: Holyoke Medical Center



- 1 - Western Mass. EMS Committee, Inc.
- 2 - Central Mass. EMS Corp.
- 3 - NorthEast EMS Inc.
- 4 - Metro Boston EMS Council, Inc.
- 5 - South Eastern Mass. EMS Council

ASAP: AgeSpan **Hospital:** Lawrence General Hospital

ASAPs: AgeSpan and Mystic Valley
Hospitals: Melrose/Wakefield Hospital and Lowell General Hospital

ASAPs: Somerville-Cambridge and Mystic Valley
Hospitals: Cambridge Hospital and Everett Hospital

ASAP: Springwell
Hospital: Newton Wellesley Hospital

ASAP: Old Colony
Hospital: Beth Israel Deaconess Plymouth

ASAPs: Greater Springfield and LifePath
Hospitals: Baystate Health, Baystate Medical Center, Baystate Franklin Medical Center

ASAP: Tri-Valley
Hospital: Milford Regional Medical Center

ASAP: Elder Services of Worcester
Hospital: UMass Memorial

HHPP Learning Collaborative Survey

December 5th: Email sent to ASAP and hospital contacts identified on HHPP application as lead contacts requesting names and emails of every staff member planning to attend the Learning Collaborative to participate in the survey. Requested all contacts be sent by December 16th

December 20th: Survey emailed to 50 identified ASAP and hospital leadership with a due date of January 5th

- 28 respondents
 - 14 ASAP and 14 hospital
 - 8 Hospital to Home Liaisons
 - 10 Director level positions (5 ASAP, 5 hospital)
 - Care Coordination, Continuity of Care, Nursing, QI/QA, Chief Program Officers, Senior Care Coordinator
 - 2 ASAP Supervisors
 - 1 ASAP Executive Director

Frequency

Topics for
Discussion

Knowledge
and Expertise
of HHPP Staff

Structure of
Meetings

HHPP Learning Collaborative

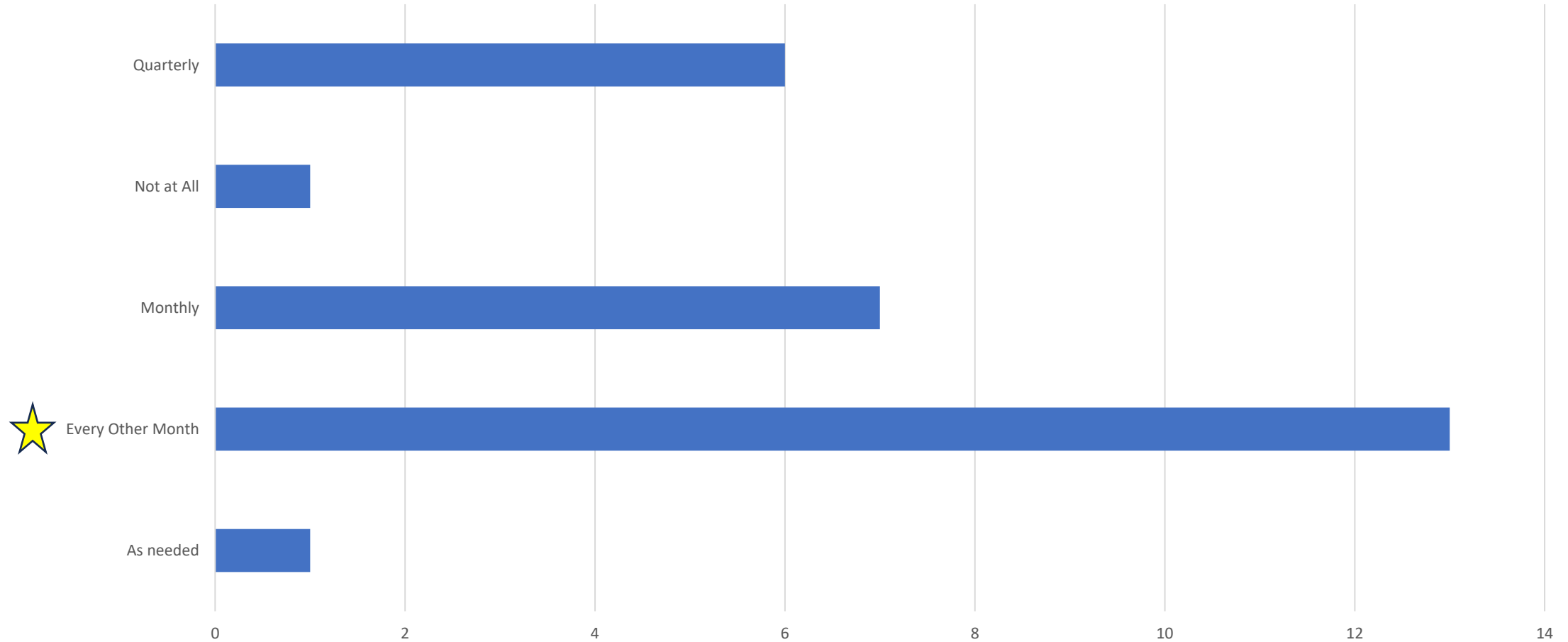
The goal of the HHPP Learning Collaborative is to enhance the skill set of individuals working directly with patients by providing education on topics affecting patient care while inpatient and once discharged home.

- Share best practices between hospitals and ASAPs
 - Workflow processes
 - Screening tools
 - Creative problem solving around complex situations
 - Documentation
 - ASAP, community, and public health programs and services
- Successes (and challenges) with patient engagement
- Technological enhancements to track patients
- Supporting patients while inpatient and post-discharge



HHPP Learning Collaborative Survey Results

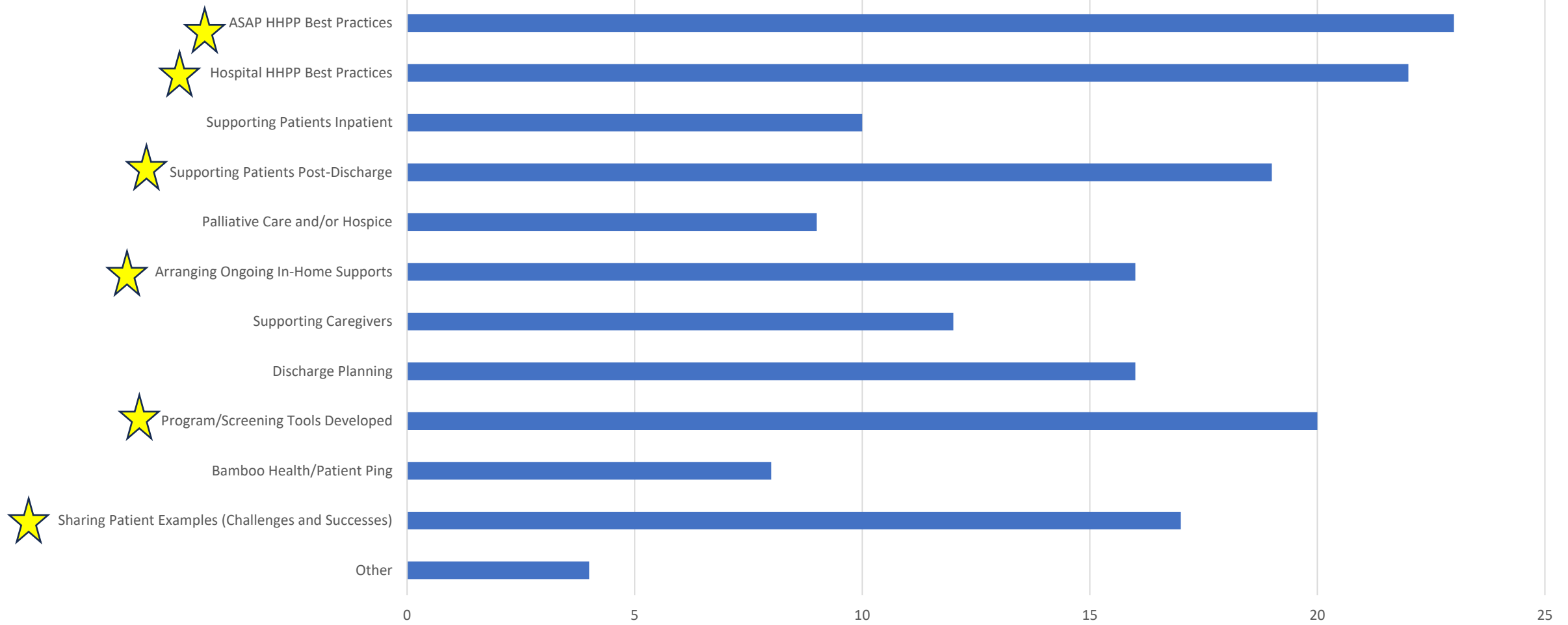
How Often Would You Attend a Learning Collaborative for HHPP



*For ASAP utilization only. Not for distribution.

HHPP Learning Collaborative Survey Results

What topics are you interested in learning about?

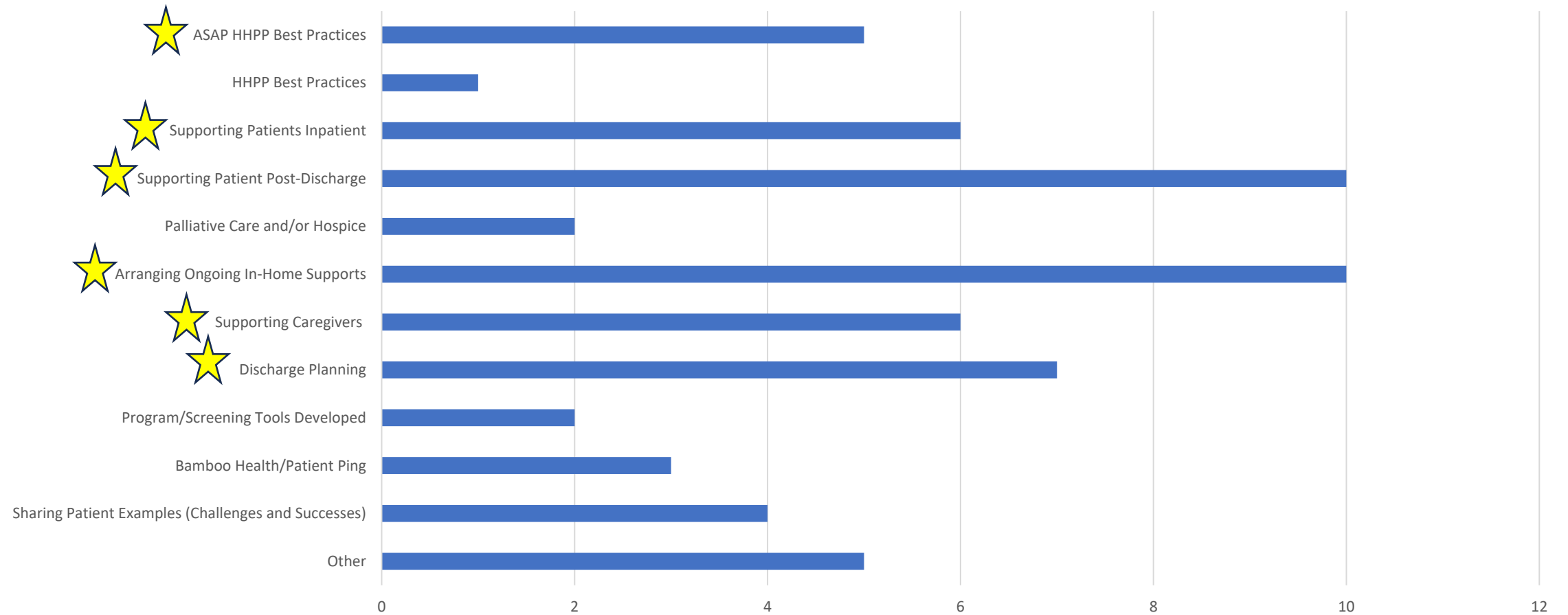


Other: Best practices for effective and efficient documentation, Careport Connect (similar to Bamboo Health), iCarol software for H2H

*For ASAP utilization only. Not for distribution.

HHPP Learning Collaborative Survey Results

What topics are you knowledgeable about and could help facilitate a discussion on?

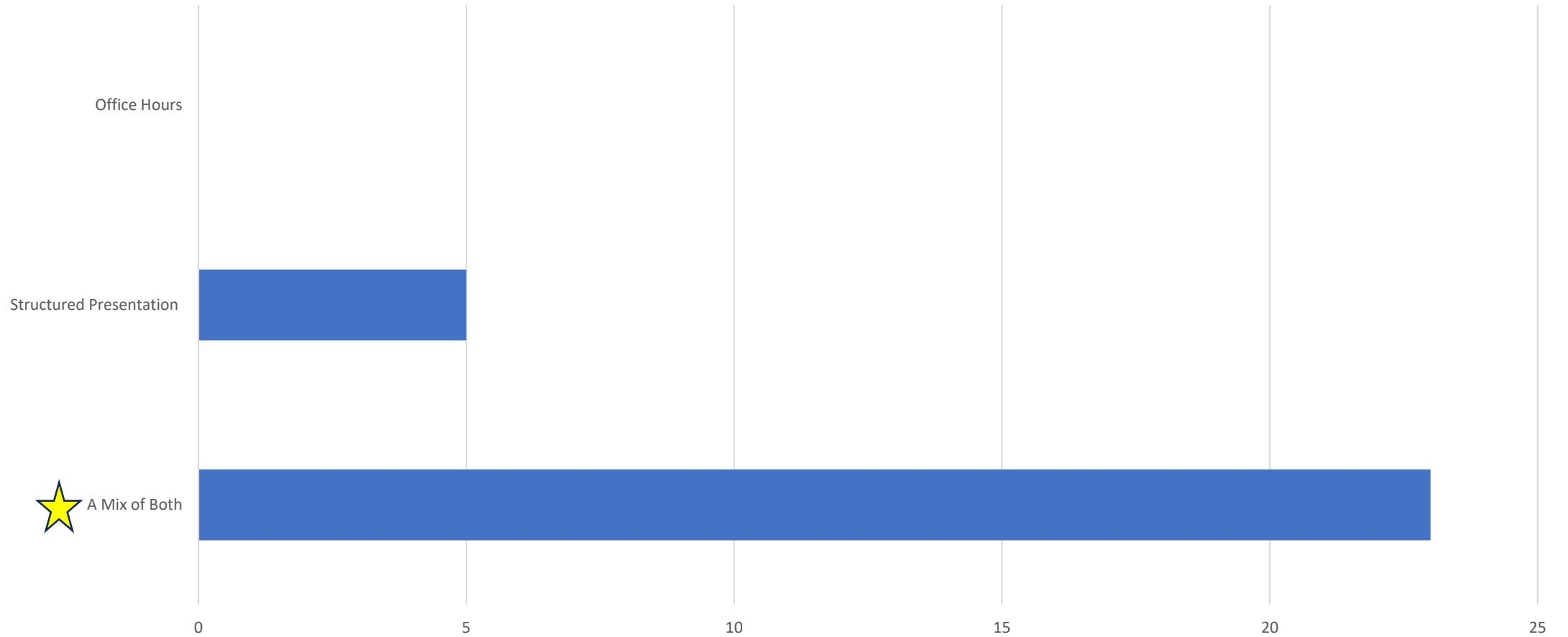


Other: Insurance Approvals and Denials and Mental Health Resources

*For ASAP utilization only. Not for distribution.

HHPP Learning Collaborative Survey Results

What type of organizational structure do you prefer for the Learning Collaborative?



*For ASAP utilization only. Not for distribution.

Questions or Comments



Next Steps

Tentative HHPP Learning Collaborative Schedule



Date	Time
Thursday, March 21 st	1:00pm-2:30pm
Wednesday, May 15 th	1:00pm-2:30pm
Monday, July 15 th	11:00am-12:00pm
Wednesday, September 18 th	2:00pm-3:00pm
Wednesday, November 13 th	1:30pm-3:00pm

Questions or ideas?

- Contact Dana.Beguerie@mass.gov