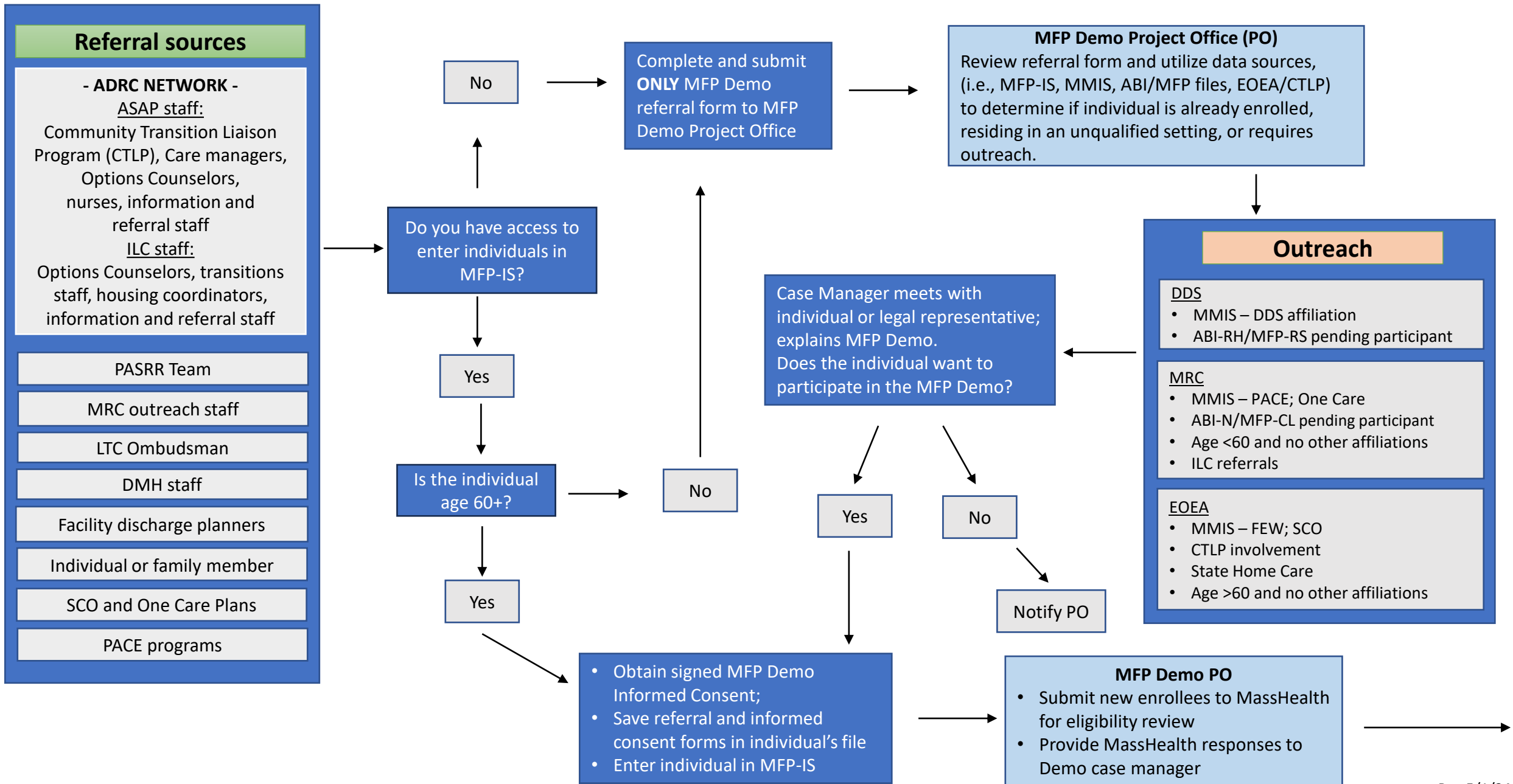


MFP Demo Workflow: Pre-Transition from the facility



MFP Demo Workflow: Continued Pre-Transition and Reassignment

MFP Demo Case Management and Service Coordination

MassHealth eligibility

- Resolve outstanding financial eligibility issues
- Complete necessary forms for MassHealth Standard or CommonHealth eligibility in the community

Support programs

- Identify potential MassHealth support types that will supplement Demo services in the community
- If appropriate, apply for HCBS waivers
- If appropriate, apply for Home Care or FEW
- Consider enrollment in One Care/SCO/PACE

Demo Services

Transitional Assistance which may include housing search, home and vehicle modifications; Community Engagement Navigation; Assistive Technology

- Identify, outreach, and contact providers
- Complete referrals
- Explore housing options and subsidies
- Arrange and authorize services and payments
 - TA, HSE, Home and vehicle modifications (MRC)
 - CEN and AT (UMMS)

Discharge planning

- Develop a transition plan
- Prior to transition, complete risk assessment and back-up plan
- Update MFP-IS

Reassignment

Upon receiving notification and/or approval of an HCBS waiver, or enrollment in One Care, PACE, SCO or Home Care program, the **MFP Demo Project Office will:**

- outreach to the new case management entity to obtain name of newly assigned Demo CM
- reassign individual in MFP-IS
- send warm transfer email

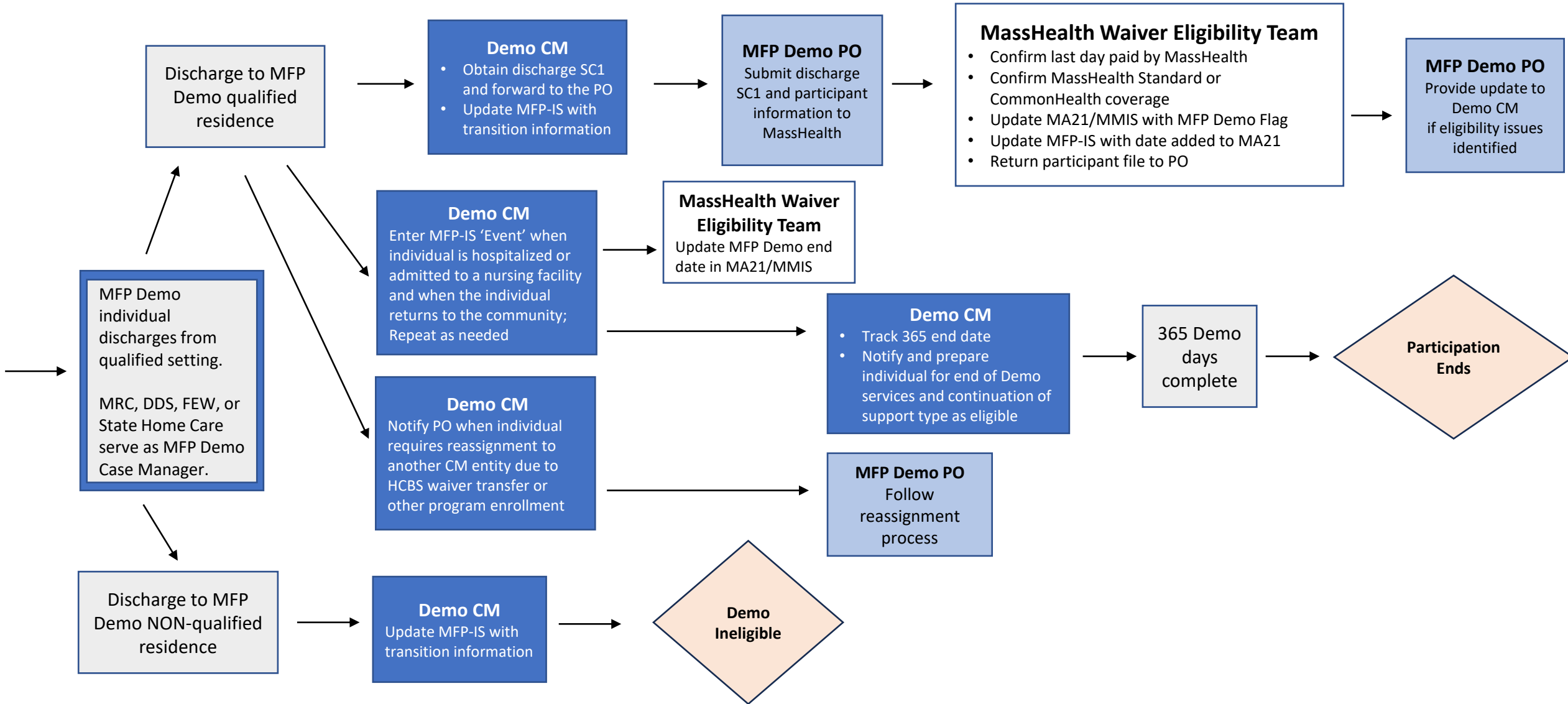
Previous and newly assigned Demo CM

- connect to share information and/or documents
- provide updates on the transition planning process
- coordinate services
- discuss status of risk assessment and back-up plan
- update individual on the case management change

CTL MFP Demo case management and service coordination ends due to individual discharging

See MFP Demo Post transition

MFP Demo Workflow: Post-Transition from the facility



← 365 'community' days; MFP Demo participants receive MFP Demo services and other services (HCBS, State Plan, State Home Care) →

MFP Demo Workflow Acronyms

ADRC	Aging and Disability Resource Consortia	MA21	MassHealth eligibility system
ABI-N	Acquired Brain Injury Non-Residential Waiver	MFP Demo	Money Follows the Person Demonstration
ABI/MFP	Acquired Brain Injury/Moving Forward Plan Waivers	MFP-CL	Moving Forward Plan Community Living Waiver
ABI-RH	Acquired Brain Injury Residential Habilitation Waiver	MFP-IS	Money Follows the Person Information System
AT	Assistive Technology	MFP-RS	Moving Forward Plan Residential Supports Waiver
CEN	Community Engagement Navigation	MMIS	Medicaid Management Information System
CM	Case Manager/Service Coordinator	MRC	Massachusetts Rehabilitation Commission
DDS	Department of Developmental Services	PACE	Program of All-inclusive Care for the Elderly
DMH	Department of Mental Health	PASRR	Preadmission Screening and Resident Review
EOEA	Executive Office of Elder Affairs	PO	Project Office
FEW	Frail Elder Waiver	SC1	MassHealth Status Change form
HCBS	Home and Community Based Waivers	SCO	Senior Care Options
HSE	Housing Search Entity	TA	Transitional Assistance
ILC	Independent Living Center	UMMS	UMass Chan Medical School
LTC	Long Term Care		